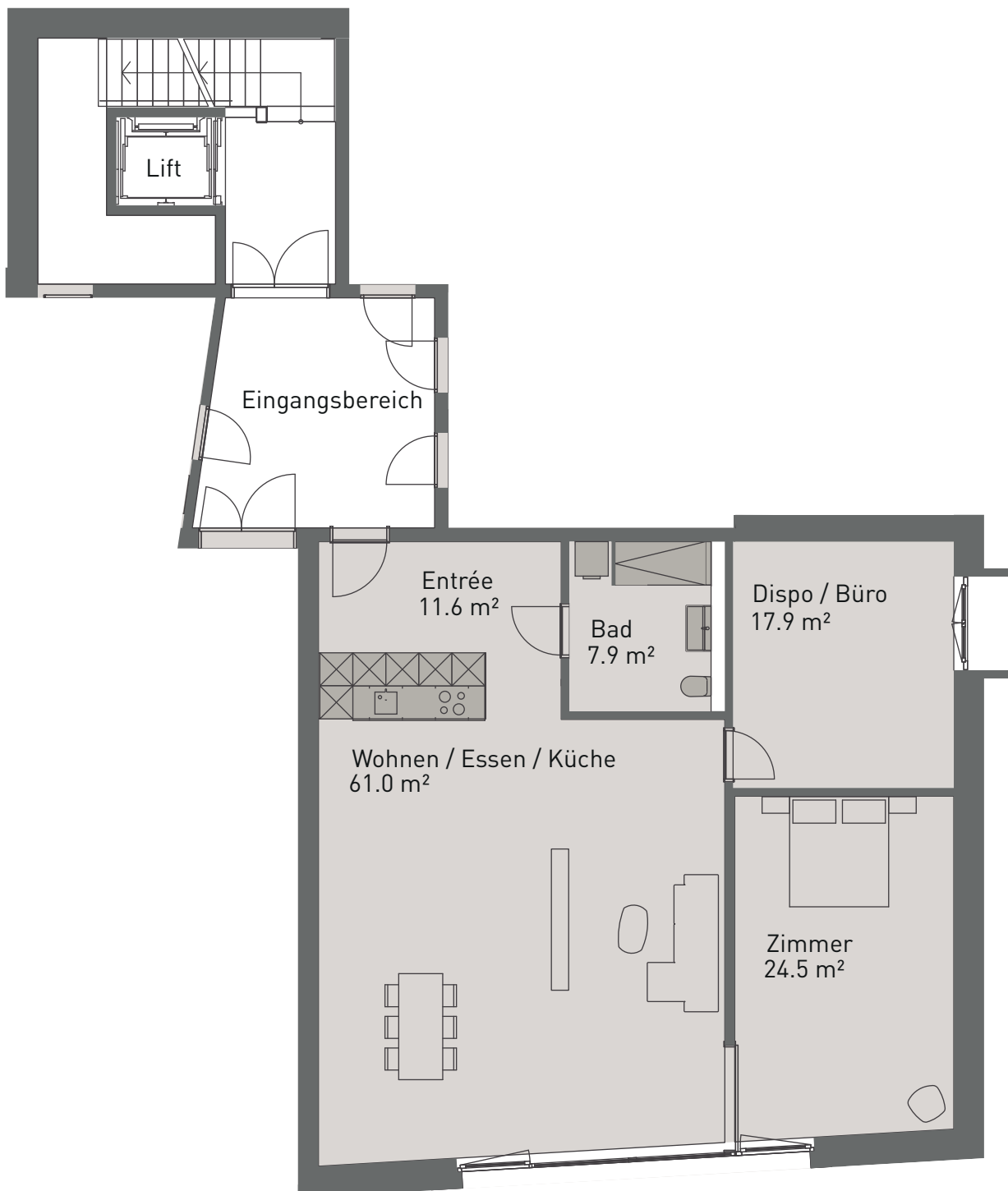
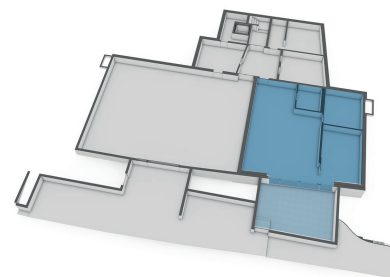


Haldenstrasse 48

Untergeschoss - WHG 1

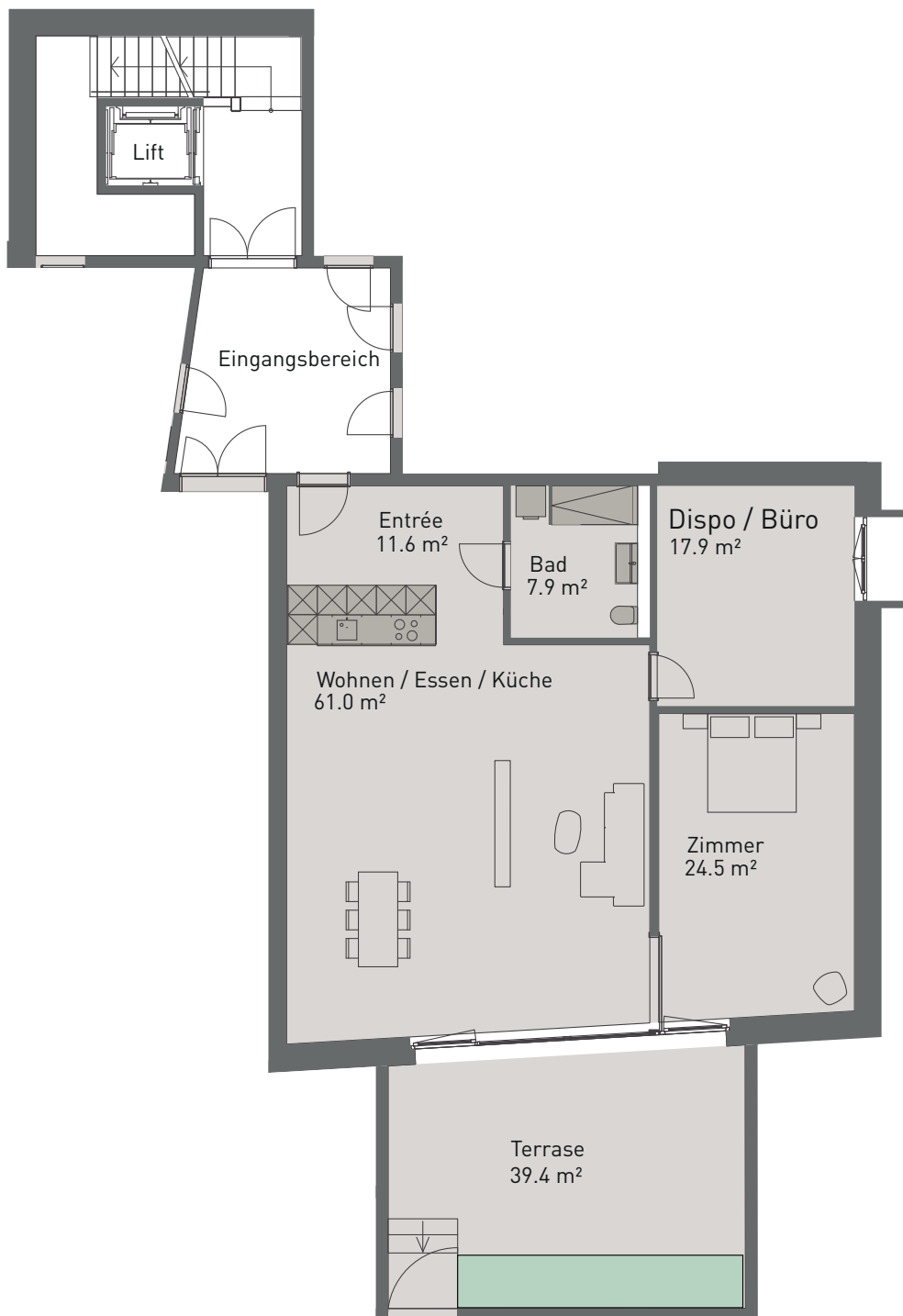
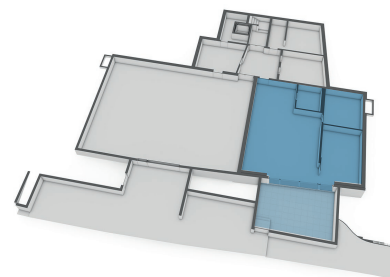
- 2.5 Zi
- Wohnfläche (NWF) 122.90 m²
- Terrasse 33.90 m²
- Keller 12 8.00 m²
- Raumhöhe 2.60 m
- Aussenfläche 39.40 m²



Haldenstrasse 48

Untergeschoss - WHG 1

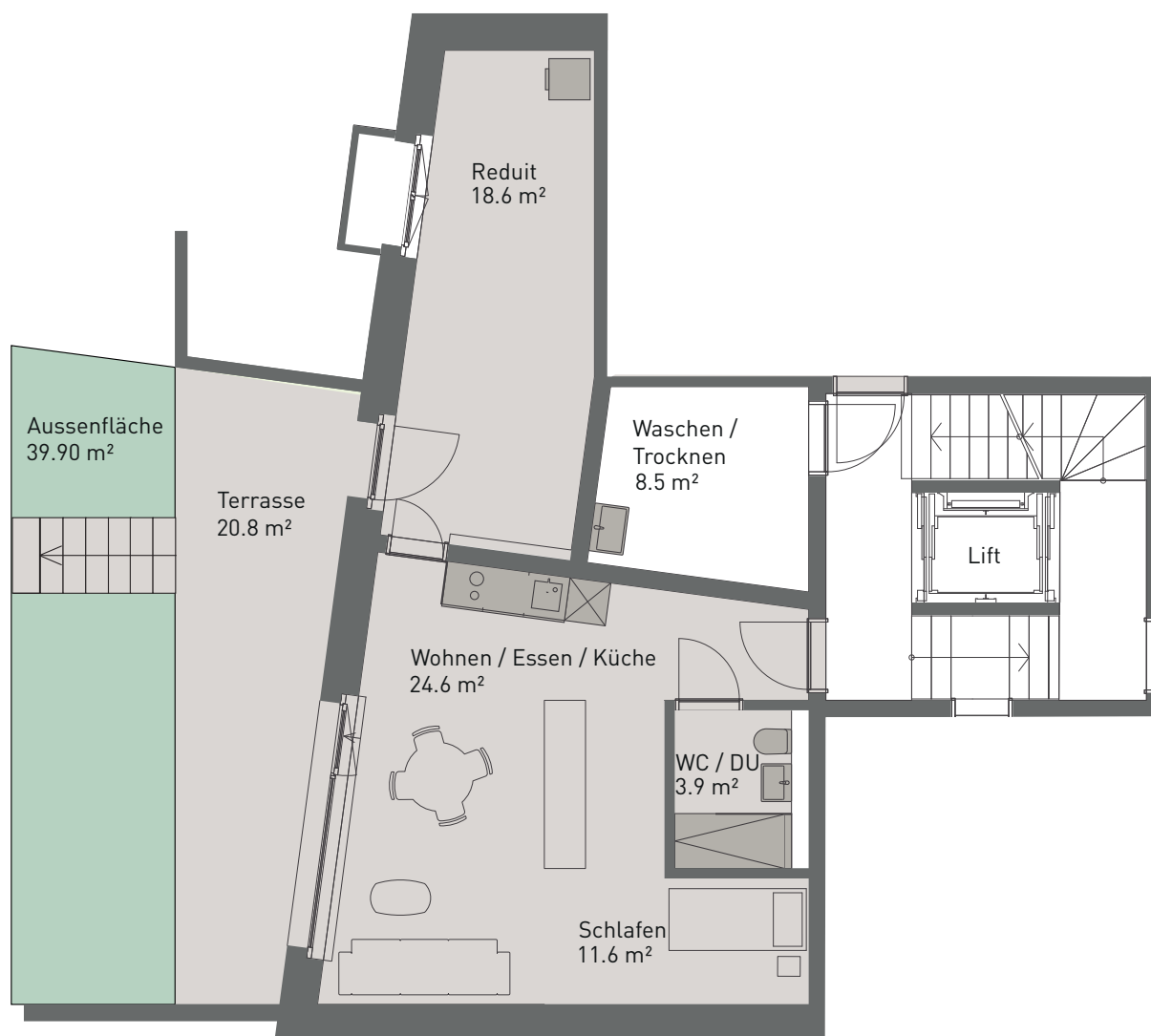
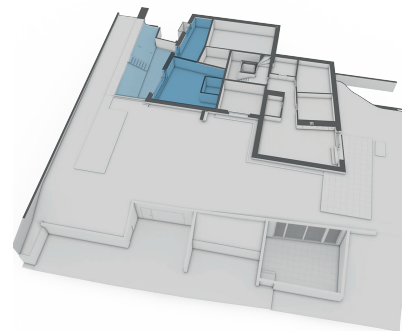
- 2.5 Zi
- Wohnfläche (NWF) 122.90 m²
- Terrasse 33.90 m²
- Keller 12 8.00 m²
- Raumhöhe 2.60 m
- Aussenfläche 39.40 m²



Haldenstrasse 48

Gartengeschoss - WHG 2

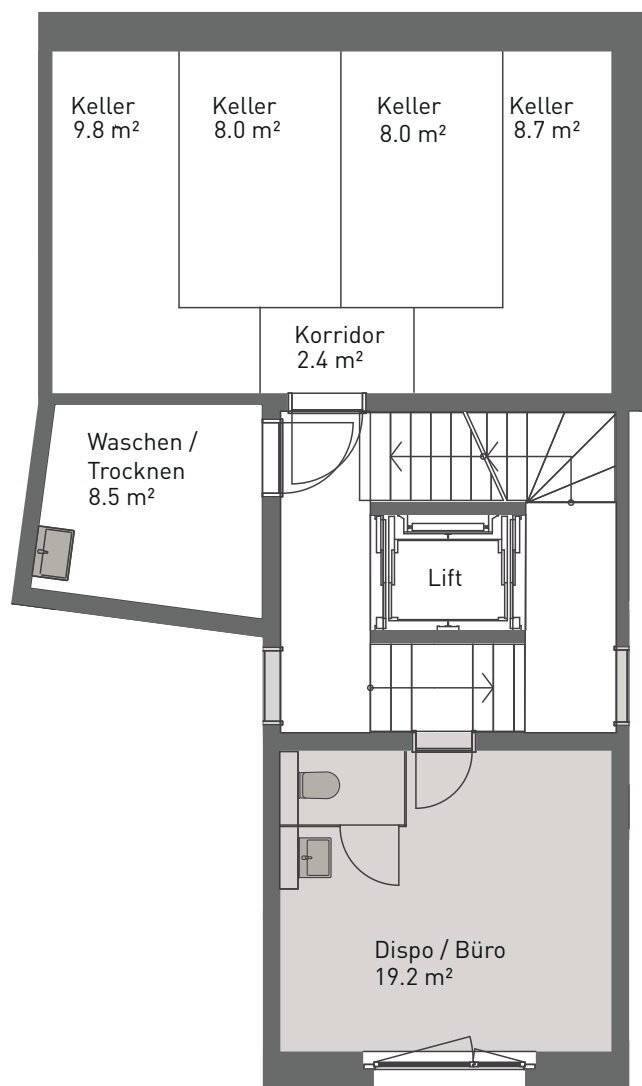
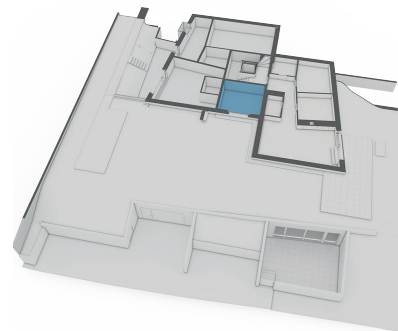
- 1.5 Zi
- Wohnfläche (NWF) 58.70 m²
- Terrasse 20.80 m²
- Aussenfläche 39.90 m²
- Keller 13 8.0 m²
- Raumhöhe 2.60 m



Haldenstrasse 48

Gartengeschoss

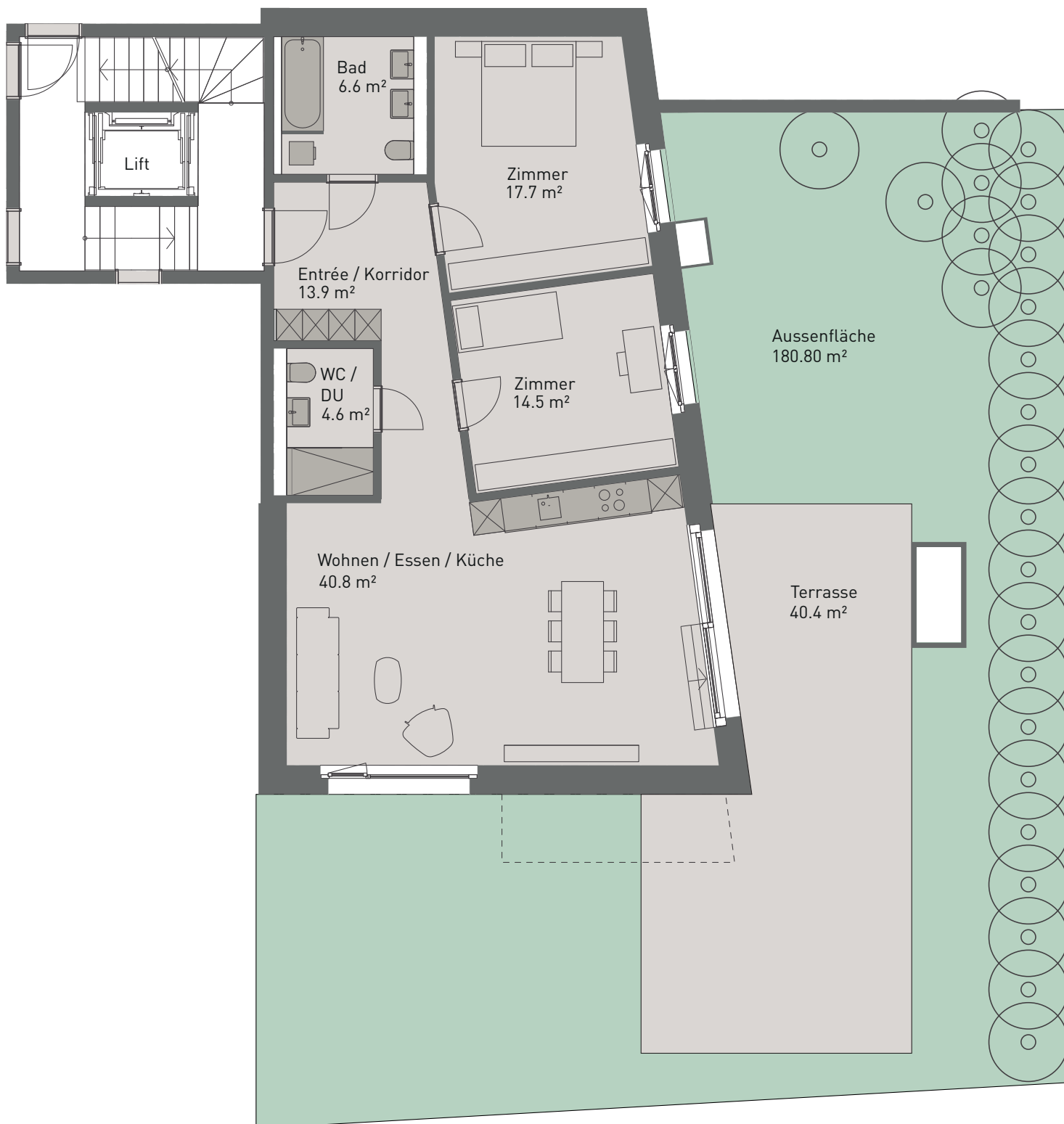
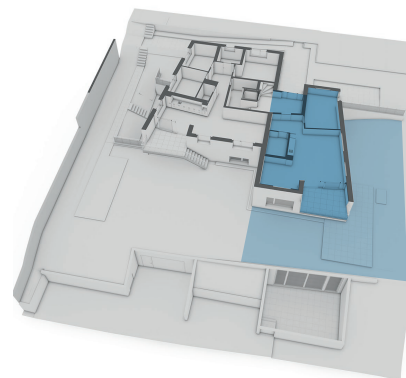
- Dispo / Büro 19.20 m²
- Nettfläche 19.20 m²
- Raumhöhe 2.10 m



Haldenstrasse 48

Gartengeschoss - WHG 3

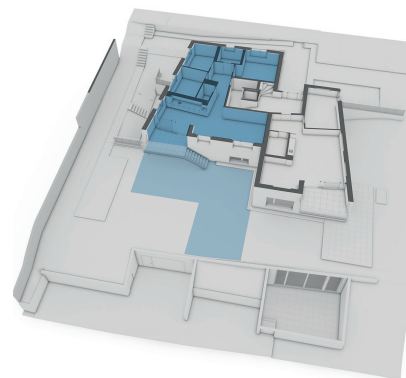
- 3.5 Zi
- Wohnfläche (NWF) 98.10 m²
- Terrasse 40.40 m²
- Aussenfläche 180.80 m²
- Keller 14 9.80 m²
- Raumhöhe 2.60 m



Haldenstrasse 48

Erdgeschoss - WHG 4

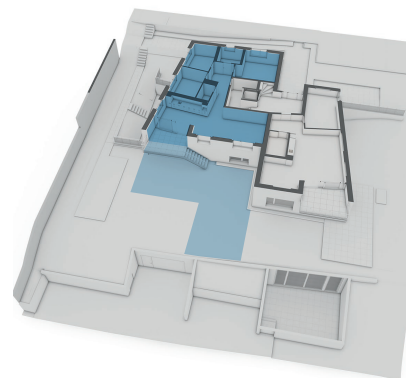
- 4.5 Zi
- Wohnfläche (NWF) 120.50 m²
- Loggia 12.70 m²
- Aussenfläche 102.30 m²
- Keller 07 10.20 m²
- Raumhöhe 2.81 m



Haldenstrasse 48

Erdgeschoss - WHG 4

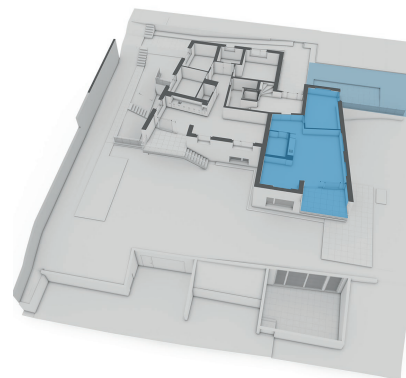
- 4.5 Zi
- Wohnfläche (NWF) 120.50 m²
- Loggia 12.70 m²
- Aussenfläche 102.30 m²
- Keller 07 10.20 m²
- Raumhöhe 2.81 m



Haldenstrasse 48

Erdgeschoss - WHG 5

- 2.5 Zi
- Wohnfläche (NWF) 80.90 m²
- Terrasse 24.10 m²
- Loggia 12.70 m²
- Aussenfläche 72.00 m²
- Keller 11 8.70 m²
- Raumhöhe 2.60 m



Haldenstrasse 48

Obergeschoss - WHG 6

- 4.5 Zi
- Wohnfläche (NWF) 136.00 m²
- Terrasse 51.00 m²
- Keller 08 10.90 m²
- Raumhöhe 2.55 - 4.27 m

